

Staebel Relax GelCell G2 Cushion User Manual

Product Code: 353GC2



Thank you for choosing Staebel Relax GelCell G2 Cushion.

We aim to ensure you are satisfied with your cushion in terms of both performance and durability. We therefore kindly ask you to spend a few minutes reading through these user instructions to ensure you can take the best possible care of your cushion.

If you have any questions that are not answered in these user instructions, please contact us at Staebel.

You will find our contact details on the bottom page of these user instructions.

USE OF CUSHION

General Information

The RELAX range of cushions are designed to provide support, weight distribution and pressure distribution for wheelchair users and people of restricted mobility who spend extended periods of time in a seated position.

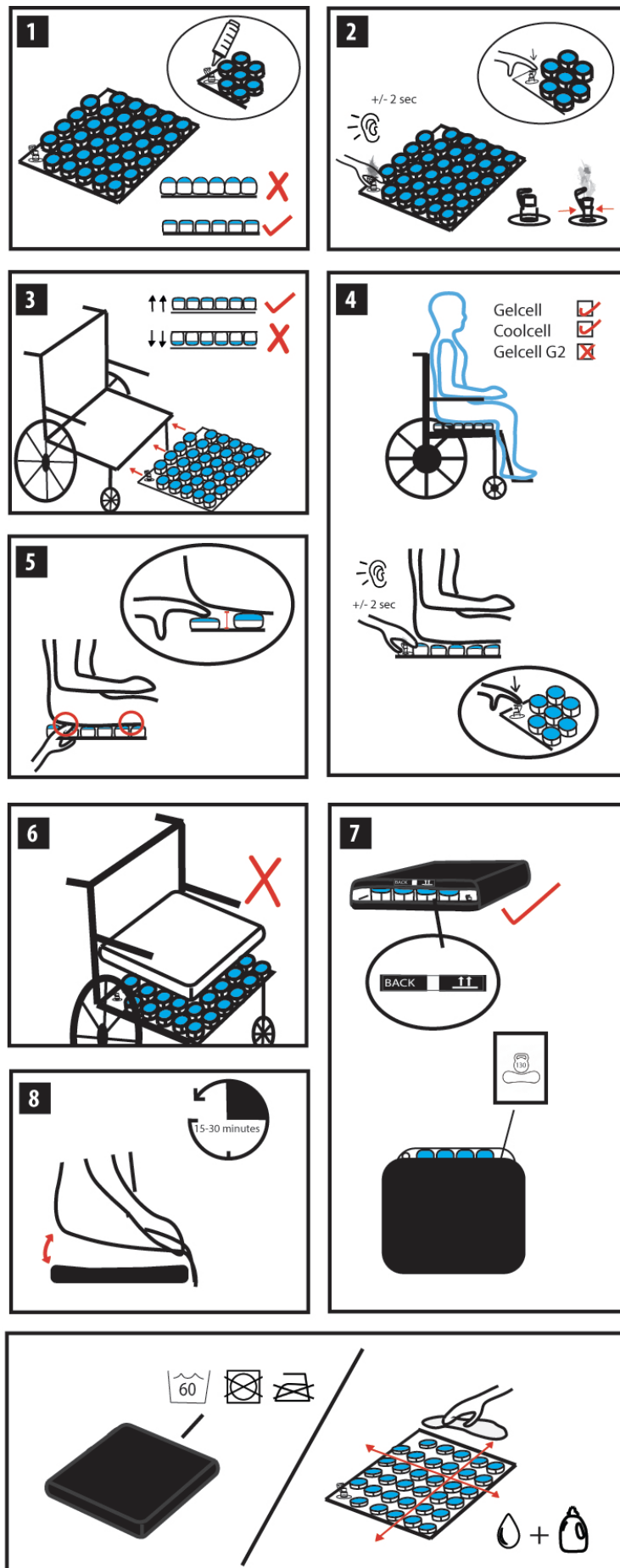
Staebel Relax range is designed to help aid with weight and pressure distribution and sitting comfort. However, no cushion can completely eliminate sitting pressure or prevent skin breakdown. The Relax cushion is not a substitute for good skincare including, proper diet, cleanliness, and regular weight shifts/ pressure reliefs. In addition, prior to prolonged sitting, every cushion should be tried for a few hours at a time while a clinician inspects your skin to ensure that red pressure spots are not developing.

- Each RELAX cushion is recommended to be used with the cover provided
- Ensure the back of the cushion, where marked, is placed to the back of the chair and the top surface, where marked, is facing upwards as indicated on the label at the opening
- Avoid using additional padding or covers as this could reduce the effectiveness of the cushion
- The inner cushion should be inspected regularly – if damaged it should not be used
- The cover if damaged should not be used
- When fitting the cushion cover ensure the back of the cushion is positioned to the back of the cover.
- It is very important to reposition the user on a regular basis
- If your RELAX wheelchair and seating cushion has been subjected to extreme temperatures (-20° C/-4°F or +40°C/104°F) please allow to revert to room temperature before use
- It is important to clean the cushion and cover between users to avoid cross contamination
- RELAX wheelchair and seating cushions are guaranteed against manufacturing defects for 2 years from date of manufacture
- Weight limits are indicated on the Relax wheelchair and seating cushion cover
- It is important to note that pressure relief will be compromised as weight increases
- Please store all products flat
- Avoid placing heavy or sharp objects on any of the products

Product Information

Specifications:

Product Code	35324	3532315	35325	35327	35328	32346
Width	355 mm (14")	380 mm (15")	400 mm (16")	450 mm (18")	400 mm (16")	450 mm (18")
Length	355mm (14")	380 mm (15")	400 mm (16")	400 mm (16")	450 mm (18")	450 mm (18")
Thickness	40 mm (1.5")	40 mm (1.5")	40 mm (1.5")	40 mm (1.5")	40 mm (1.5")	40 mm (1.5")
SWL	130 kg	130 kg	130 kg	130 kg	130 kg	130 kg



INFLATING YOUR CUSHION

1. Inflate the Gelcell cushion with the pump provided until the cushion is level, do not continue pumping, as excessive inflation will damage the cushion. (Refer to Diagram on previous page)
2. Ensure the cushion is positioned with the valve to the back of the chair. Before placing the user on the cushion, squeeze the valve to release excess air – i.e., until air pressure is equalized inside and outside the cushion.
3. Close the valve.
4. The user now sits on the cushion in an upright position, ensuring the back is straight and maintaining as near as possible an angle of 90 degrees at the hips and knees.
5. Open the valve and squeeze to release air for approximately 2 seconds, or until it is felt by the user to have reached the most comfortable pressure. As air is released the cushion will conform to the shape of the user.
6. Close the valve.
7. Place your hand under the area of most bony prominence to ensure there is enough inflation between the user and base of cushion.
8. The cushion is now properly adjusted.
9. The level of inflation should be checked on a regular basis.

IMPORTANT

- Always ensure that the cushion is properly inflated and that the user is being supported by the cushion – i.e. the user never touches the base of the cushion.
- If the Gelcell or GelcellG2 is being used by various users, follow the steps above each time.
- It is important to use the correct cushion cover with your Relax cushion.
- Please keep these instructions in a safe place for referral.
- If user shows signs of skin redness while using cushion discontinue use.
- Serious Incidents that occur in relation to these products should be reported to Staebel and the Competent Authority of your member state.



DISPOSAL INSTRUCTIONS

- Any disposal practice must be in compliance with all local and national laws and regulations. All packaging materials used for your RELAX cushion can be recycled
- If returning the product, the cover should be washed and the inner cushion disinfected before being placed in a sealed plastic bag
- If you have any questions or comments regarding the RELAX range, please contact Staebel or your local distributor

DISINFECTING & CLEANING

The disinfectant market is a very diverse one comprised of a number of suppliers. Thus, testing types of chemistries rather than brands is the most logical approach.

All outer covers can be washed at 60°C. Film covers can be wiped clean. Always follow manufacturers guidelines for cleaning product dilution ratios

Main Chemistry	Cleaner (manufacturer)
Chloroxylenol	Dettol
Chlorine	Milton
Ammonia	Sani-Cloth AF Universal Wipe
Sodium Gluconate	Sani- Cloth detergent Wipes

FLAMMABILITY

External Flammability tests were carried out in accordance with BS EN 1021-1 & BS EN 1021-2 on cushions and covers.

LIFECYCLE/ DURABILITY TEST

Silicone and foams show resistance to wear and tear which is important for the long term life of the products. Under normal conditions of use a Staebel Relax product is repeatedly compressed and relaxed when a patient sits on and off a cushion.

The life cycle test assesses the impact of a human representation being applied to and removed from the cushion continuously at a predetermined rate dependent on the size and specific application of the product. It is carried out at room temperature in an enclosed area.

Staebel require a product to undergo durability testing to the equivalent of 5 years of usage.

Once the cushion has undergone the life cycle test, it is again pressure mapped to evaluate the effect the life cycle test has had on the internal structure of the cushion and if it could potentially cause any risk to the user.

All Relax cushions have passed these tests.

WARRANTY

All Relax cushions have undergone rigorous testing and are manufactured to ISO 13485:2016 standards, each carrying the CE Quality mark and are guaranteed against manufacturing defects for **2 years**.