

# Staebel Total Flow Max Active Air Mattress

Product Code: 3-CM-M-FAS

A replacement alternating pressure relieving mattress system with triple cell-on-cell air cells and a static base section for effective prevention and treatment of patients at very high risk category. With simple to use design, this mattress enables the carer to quickly set up the mattress system and have it operating at optimal pressure.

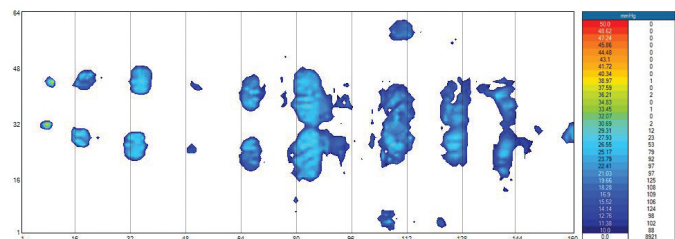


## Product Features:

- Nylon TPU
- Independently Removable Cells
- Cell Structure: Triple cell-on-cell
- Remote control
- Pillow function
- CPR Quick Release
- Anchoring Straps
- Zipped storage bag
- Multi-stretch, waterproof & vapour permeable PU cover
- Micro-Perforated Cells
- Antimicrobial machine washable
- 360 degree zipper
- Robust Pump Connection
- Transport Mode

## Specifications:

Size	Single	King Single
Width	900 mm	1070 mm
Length	2000 mm	2000 mm
Thickness	200 mm	200 mm
Weight	10 kg	10 kg
SWL	200 kg	200 kg



# A highly versatile and cost effective mattress solution.

Total Flow Max incorporates cutting-edge Total Air Technology – constant auto pressure sensing through an air sensor and microcomputer regulator to provide ultra-low interface pressure and promote an even ambience for natural sleep patterns and stable blood circulation with silen pump operation.



## Specifications:

Width	240 mm
Length	345 mm
Height	125 mm
Weight	2.8 kg

## Pump Features:

- Operating System: Total Air Technology
- Cycle Time: 10, 15, 20, 25 minutes
- Memory function
- Air Output: 8 litres/minute
- Power Input: AC220–240V, 50–60Hz
- Power Consumption: 7W
- Fitted with hanging brackets

## Control Panel:

