

Staebel Total Flow Plus Active Air Mattress

Product Code: 3-CM-M-OLB

Staebel Total Flow Plus Active Air Mattress is a replacement alternating pressure relieving mattress system with 5" air cells and a self-inflating 2" sealed foam base for effective prevention and treatment of users at high risk. With simple to use settings and functionality, this mattress enables easy operating at optimal pressure.

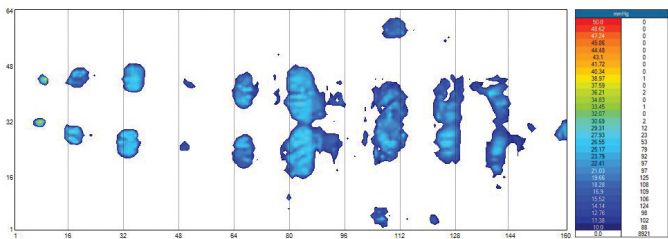
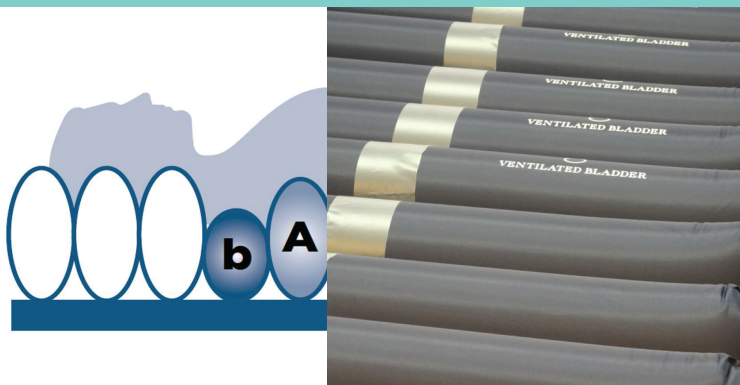


Product Features:

- Nylon TPU
- Independently Removable Cells
- Cell Structure: cell-on-cell
- Covert sealed air cells
- Transport Mode
- Pillow Function
- CPR Release
- Anchoring Straps
- Zipped storage bag
- Multi-stretch, waterproof & vapour permeable PU cover
- Micro-perforated cells
- Antimicrobial, machine washable
- 360 Degree zipper
- Robust pump connection

Specifications:

Size	Single	King Single
Width	900 mm	1070 mm
Length	2000 mm	2000 mm
Thickness	177 mm	177 mm
Weight	5.5 kg	5.5 kg
SWL	200 kg	200 kg



A highly versatile and cost effective mattress solution.

Total Flow Plus incorporates cutting-edge Total Air Technology – constant auto pressure sensing through an air sensor and microcomputer regulator to provide ultra-low interface pressure and promote an even ambience for natural sleep patterns and stable blood circulation with silent pump operation.



Specifications:

Width	240 mm
Length	345 mm
Height	125 mm
Weight	2.8 kg

Pump Features:

- Operating System: Total Air Technology
- Cycle Time: 10, 15, 20, 25 minutes
- Memory function
- Air Output: 8 litres/minute
- Power Input: AC220–240V, 50–60Hz
- Power Consumption: 7W
- Fitted with hanging brackets

Control Panel:

